

## PERFORMANCE

### Processor

AMD Ryzen™ 7 PRO 6850U (8C / 16T, 2.7 / 4.7GHz, 4MB L2 / 16MB L3)

### Graphics

Integrated AMD Radeon™ 680M Graphics

### Chipset

AMD SoC Platform

### Memory

16GB Soldered LPDDR5-6400

### Memory Slots

Memory soldered to systemboard, no slots, dual-channel

### Max Memory

16GB soldered memory, not upgradable

### Storage

1TB SSD M.2 2280 PCIe® 4.0x4 NVMe® Opal 2.0

### Storage Support

One drive, up to 2TB M.2 2280 SSD

### Storage Slot

One M.2 2280 PCIe 4.0 x4 slot

### Card Reader

None

### Optical

None

### Audio Chip

High Definition (HD) Audio, Realtek® ALC3287 codec

### Speakers

Stereo speakers, 2W x2, Dolby® Audio™

### Camera

FHD 1080p + IR Hybrid with Privacy Shutter

### Microphone

2x, Array

### Battery

Integrated 52.5Wh

### Power Adapter

65W USB-C® (3-pin)

## DESIGN

### Display

16" WUXGA (1920x1200) IPS 300nits Anti-glare, 45% NTSC

### Touchscreen

None

### Keyboard

Backlit, Czech / Slovak

### Case Color

Thunder Black

### Case Material

PC + 20% CF + 50% GF (Top), PPS (Bottom)

### Dimensions (WxDxH)

361.9 x 255.5 x 20.5 mm (14.25 x 10.06 x 0.81 inches)

### Weight

Starting at 1.769 kg (3.9 lbs)

## SOFTWARE

### Operating System

Windows® 11 DG Windows 10 Pro 64, Czech / Slovak / English

### Bundled Software

None

## CONNECTIVITY

### Ethernet

100/1000M (RJ-45)

### WLAN + Bluetooth®

Qualcomm® Wi-Fi® 6E NFA725A, 11ax 2x2 + BT5.1

### WWAN

WWAN Upgradable to 4G

### SIM Card

None

### NFC

None

### Standard Ports

- 1x USB 3.2 Gen 1
- 1x USB 3.2 Gen 1 (Always On)
- 2x USB-C 3.2 Gen 2 (support data transfer, Power Delivery 3.0 and DisplayPort™ 1.4a)
- 1x HDMI®, up to 4K/60Hz
- 1x Ethernet (RJ-45)
- 1x Headphone / microphone combo jack (3.5mm)

### Optional Ports (configured)

1x Smart Card Reader + 1x Nano-SIM Card Slot

### Docking

Various docking solutions supported via USB-C.

For more compatible docking solutions, please visit [Docking for ThinkPad® T16 Gen 1 \(AMD\)](#)

### Monitor Cable

None

## SECURITY & PRIVACY

### Smart Card Reader

Smart Card Reader

### Security Chip

Discrete TPM 2.0, Microsoft® Pluton TPM 2.0

### Fingerprint Reader

Touch Style, Match-on-Chip, Integrated in Power Button

### Physical Locks

Kensington® Nano Security Slot™, 2.5 x 6 mm

### Other Security

- Camera privacy shutter
- IR camera for Windows® Hello
- Glance by Mirametrix®

## MANAGEABILITY

### System Management

DASH

## SERVICE

### Base Warranty

3-year, Courier or Carry-in

### Included Upgrade

CO2 Offset 1.5 ton (5WSOZ74928), 1Y Premier WHB (CPN) (5WS1B38516), 3Y Onsite from 3Y Depot WHB (CPN) (5WS1G97744)

## ACCESSORIES

### Bundled Accessories

None

## CERTIFICATIONS

### Green Certifications

- EPEAT™ Gold
- ENERGY STAR® 8.0
- ErP Lot 3
- TCO Certified 9.0
- RoHS compliant

### Mil-Spec Test

MIL-STD-810H military test passed

## MODEL

TopSeller	: Yes	Announce Date	: 2022-07-26
EAN / UPC / JAN	: 0196802379113	End of Support	: N/A

## Premier Support - A direct 24x7x365 line to our most elite technicians.



Advanced technical support, 24x7x365, in more than 100 markets



Technical Account Managers for proactive relationship and escalation management



Comprehensive hardware & OEM software support



Priority on service delivery and repair parts



Single point of contact for simplified end-to-end case management



Lenovo Service Connect Portal for customized reporting and product support

## Accidental Damage Protection - Protection of your PC from the unexpected.

Experience shows that a significant portion of devices may be damaged (and not covered under warranty) in the first three years. Lenovo's Accidental Damage Protection service covers accidents beyond the system warranty such as drops, spills, bumps and even electrical surges. Make sure your new device has maximum protection, avoid unplanned costs and get peace of mind.

## Base Warranty - Included with the systems you purchase, default 1- or 3-year coverage window.

## Warranty Extensions & Upgrades - Service and protection that's right for your circumstances.

- Pick Up & Return Courier
- Onsite Support
- Technician Installed Customer
- Replaceable Unit Service
- International Warranty Upgrade

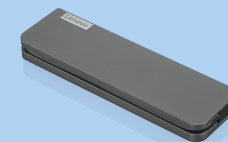
Lenovo may not offer the products, services or features discussed in this document in all regions. Lenovo may withdraw an offering at any time. Information is subject to change without notice. Consult your local representative for information on offerings available in your area. Lenovo reserves the right to change specifications or other product information without notice. Lenovo is not responsible for photographic or typographical errors. Lenovo provides this publication "as is" without warranty of any kind, either express or implied, including the implied warranties of merchantability or fitness for a particular purpose.

## Recommended Accessories



### ThinkPad Thunderbolt 3 Dock Gen 2 - US 40AN0135US

Lenovo understands that modern business depends on a wide variety of notebooks and devices from different brands working seamlessly together to meet business needs. To deliver this experience, ThinkPad Thunderbolt 3 D...



### Lenovo USB-C Mini Dock\_US 40AU0065US

Expand Your Potential with An Universal Mini Dock; Lenovo understands that modern business depends on a wide variety of PC's and even brands to meet their business needs. To make this easier Lenovo USB-C Mini dock is ...

For a full list of accessories and services, please visit:  
<https://smartfind.Lenovo.com>

**Lenovo**

**PSREF**  
Product Specifications  
Reference