

ThinkCentre M80q Gen 3 11U10009CK

Lenovo

PSREF
Product Specifications
Reference

PERFORMANCE

- Processor**
Intel® Core™ i5-12500T, 6C (6P + 0E) / 12T, P-core 2.0 / 4.4GHz, 18MB
- Graphics**
Integrated Intel UHD Graphics 770
- Chipset**
Intel Q670 Chipset
- Memory**
1x 8GB SO-DIMM DDR5-4800
- Memory Slots**
Two DDR5 SO-DIMM slots, dual-channel capable
- Max Memory**
Up to 64GB DDR5-4800
- Storage**
256GB SSD M.2 2280 PCIe® Gen 4x4 Value NVMe® Opal
- Storage Support**
Up to three drives, 1x 2.5" HDD + 2x M.2 SSD
• 2.5" HDD up to 1TB
• M.2 SSD up to 2TB each
- Optical**
None
- Audio Chip**
High Definition (HD) Audio, Realtek® ALC256VB codec
- Speakers**
2Wx1
- Power Supply**
90W 89% Adapter

DESIGN

- Keyboard**
USB Traditional Keyboard, Black, Czech / Slovak
- Mouse**
USB Calliope Mouse, Black
- Expansion Slots**
• Two M.2 PCIe Gen 4x4 slots (for SSD)
• One M.2 slot (for WLAN)
- Case Color**
Black
- Stand**
Vertical Stand
- Adapter Cage**
None
- Toolless Chassis Screw**
Toolless Chassis Screw

- Dust Filter**
Dust Filter
- Mounting**
None
- IO Box**
None
- Form Factor**
Tiny (1L)
- Dimensions (WxDxH)**

Dimensions	Models
Tiny only	179 x 182.9 x 36.5 mm with rubber feet (7.05 x 7.2 x 1.44 inches with rubber feet)
Tiny & ODD	204.2 x 186.6 x 64 mm with rubber feet (8.04 x 7.35 x 2.52 inches with rubber feet)

Weight

Models	Weight
Tiny only	1.25 kg (2.76 lbs)
With VESA mount & ODD box	1.74 kg (3.84 lbs)

CONNECTIVITY

- Ethernet**
Integrated 100/1000M
- WLAN + Bluetooth®**
Intel AX211 Wi-Fi® 6E, 2x2 + BT5.2
- Front Ports**
• 1x USB 3.2 Gen 2
• 1x USB 3.2 Gen 2 (Always On and 5V@2.1A charging)
• 1x USB-C® 3.2 Gen 2
• 1x headphone / microphone combo jack (3.5mm)
- Rear Ports**
• 2x USB 3.2 Gen 1 (one supports Smart Power On)
• 2x USB 3.2 Gen 2
• 1x HDMI® 2.1 TMDS
• 1x DisplayPort™ 1.4

- Chassis Intrusion Switch**
Chassis Intrusion Switch

MANAGEABILITY

- System Management**
vPro Enterprise

SERVICE

- Base Warranty**
3-year, Onsite
- Included Upgrade**
1Y Premier Support from 3Y Onsite WHB (CPN) (5WS1F31123)

CERTIFICATIONS

- Green Certifications**
• EPEAT™ Gold
• ENERGY STAR® 8.0
• ErP Lot 3
• TCO Certified 9.0
• RoHS compliant
- Other Certifications**
• TÜV Rheinland® Ultra Low Noise| TÜV Rheinland Ultra Low Noise
• TÜV Rheinland Ultra Low Noise
- Mil-Spec Test**
MIL-STD-810H military test passed

SOFTWARE

- Operating System**
Windows® 11 Pro 64, Czech / Slovak / English
- Bundled Software**
None

MODEL

- | | | | |
|------------------------|-----------------|-----------------------|--------------|
| TopSeller | : Yes | Announce Date | : 2022-03-29 |
| EAN / UPC / JAN | : 0196379576236 | End of Support | : 2028-10-29 |

- 1x Ethernet (RJ-45)

Optional Rear Ports (configured)

1x serial + 1x DP 1.2

Monitor Cable

None

SECURITY & PRIVACY

Security Chip

Discrete TPM 2.0, TCG certified

Fingerprint Reader

No fingerprint reader

Physical Locks

Kensington® Security Slot, 3 x 7 mm

Premier Support - A direct 24x7x365 line to our most elite technicians.



Advanced technical support, 24x7x365, in more than 100 markets



Technical Account Managers for proactive relationship and escalation management



Comprehensive hardware & OEM software support



Priority on service delivery and repair parts



Single point of contact for simplified end-to-end case management



Lenovo Service Connect Portal for customized reporting and product support

Accidental Damage Protection - Protection of your PC from the unexpected.

Experience shows that a significant portion of devices may be damaged (and not covered under warranty) in the first three years. Lenovo's Accidental Damage Protection service covers accidents beyond the system warranty such as drops, spills, bumps and even electrical surges. Make sure your new device has maximum protection, avoid unplanned costs and get peace of mind.

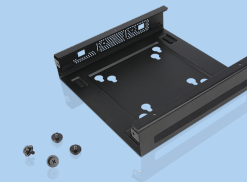
Base Warranty - Included with the systems you purchase, default 1- or 3-year coverage window.

Warranty Extensions & Upgrades - Service and protection that's right for your circumstances.

- Pick Up & Return Courier
- Onsite Support
- Technician Installed Customer
- Replaceable Unit Service
- International Warranty Upgrade

Lenovo may not offer the products, services or features discussed in this document in all regions. Lenovo may withdraw an offering at any time. Information is subject to change without notice. Consult your local representative for information on offerings available in your area. Lenovo reserves the right to change specifications or other product information without notice. Lenovo is not responsible for photographic or typographical errors. Lenovo provides this publication "as is" without warranty of any kind, either express or implied, including the implied warranties of merchantability or fitness for a particular purpose.

Recommended Accessories



ThinkCentre Tiny VESA Mount II

4XF0N03161

The ThinkCentre Tiny VESA Mount II is a unique design specific to house the Tiny PC while featuring the universal VESA mount configuration. The VESA standard enables this mount to attach to anything that is VESA comp...



ThinkCentre Tiny Sandwich Kit II

4XH0N04098

The ThinkCentre Tiny Sandwich Kit II is a mechanical bracket which can mount your ThinkCentre Tiny PC between monitor and ThinkCentre Extend Arm. The Tiny Sandwich kit enables more desktop and floor space while provid...

For a full list of accessories and services, please visit:
<https://smartfind.Lenovo.com>

Lenovo

PSREF
Product Specifications
Reference